

OneImpact CAMEROON

OneImpact Community-led Monitoring (CLM) : An innovative collaborative solution for community and health systems to find the missing children with TB in Cameroon

BACKGROUND

Cameroon is one of the 32 countries with the highest tuberculosis (TB) burden, having reported incidence rate of 157 cases per 100,000 people (WHO data, 2021). The review of the **National Strategic Plan (NSP) 2024-2026** reveals that all TB control interventions should be carried out with a focus on **screening for pediatric TB**, raising the **proportion to 10-12%, compared with the 6%** still observed today. According to the **Cameroon Community-Right and Gender Assessment (2020)**, children should be a priority target population in the fight to end TB, as is the meaningful and more systematic engagement of people affected by TB to overcome barriers to access in the response.

In **2021** in response to these two particular findings and the recommendations to introduce community-led monitoring as a key strategy for community engagement, **Cameroon, with the support of Challenge Facility for Civil Society adapted the OneImpact solution.** Leveraging the example and OneImpact CLM work conducted by ADPP Mozambique, to investigate possible gaps in household screening (children <15 years).

Cameroon administered the Childhood TB survey using OneImpact to identify gaps in contact investigation services. The survey has been carried out in the central region, **covering 15 health facilities in 8 health districts** with the active collaboration of health facilities to find those lost to follow-up and cases missing focused on tracing contact children of 0-5 and co-infected children aged 6-15 years escaping the system of systematic treatment.

ONEIMPACT CAMEROON AT A GLANCE

Lead CLM implementer: For Impacts in Social Health (FIS).

CLM Strategic Partner: National Tuberculosis Programme (NTP) and Ministry of Health (MOH)

Implementing partners: TB People Cameroon, OCAS (Catholic health action organization)

Operational since: 2021

Target Key and vulnerable populations targeted: Children

Supported by: Stop TB Partnership CFCS, (USAID, L'Initiative), TGF, USAID, CDC



148
TOTAL PEOPLE AFFECTED BY TB ENGAGED IN SURVEY



15
PEOPLE TRAINED ONEIMPACT (FOR CHILDHOOD SURVEY)



15 HEALTH FACILITIES & 8 DISTRICTS
COVERAGE IN CAMEROON MAINLAND

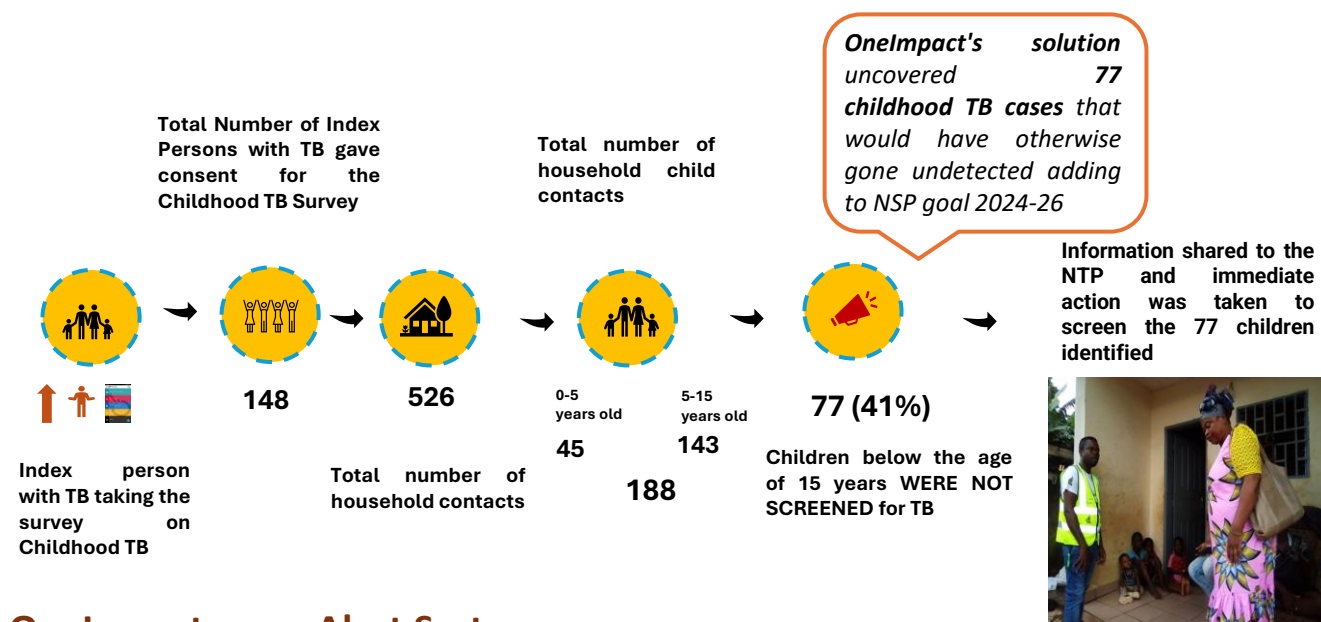


77 (41%)
MISSING TB CHILDREN FOUND

SURVEY IMPLEMENTATION BY CHWs USING ONEIMPACT

From April to June 2024, 15 community health workers (CHWs) conducted a survey among 148 consenting people with TB during routine household visits, across eight health districts in Yaoundé: Efoulan, Biyem-Assi, Djoungolo, Nkolbisson, Odza, Nkolndongo, Mvog-ada, and Cité Verte.

ONEIMPACT CLM DATA ON THE TB CHILDHOOD SURVEY



OneImpact as an Alert System

The OneImpact TB childhood survey successfully identified 526 household contacts, among the 148 consenting adults with TB, leading to the identification of 77 children who had not been screened for TB across eight health districts in Yaoundé: Efoulan, Biyem-Assi, Djoungolo, Nkolbisson, Odza, Nkolndongo, Mvog-ada, and Cité Verte. This information was immediately shared with the respective health districts, which resulted in immediate action being taken: the 77 children were screened and referred for appropriate treatment and care, as needed.

Furthermore, FIS used this data to inform their communication and advocacy work; they mobilized their community network to raise **awareness about Childhood TB in the respective districts, based on the evidence generated.**

The findings and data from this pilot were also **shared with the National Tuberculosis Program (NTP) and presented to the Ministry of Health (DLMEP).** Additionally, the results were **showcased at the UNION workshop in Benin as part of the CETA program in 2024.**

Conclusion

OneImpact Cameroon is an effective solution for rapid, evidence-based community and health responses, providing unique and real time insights into service gaps and opportunities for effective collaborative health and community responses to find the missing children affected by TB in Cameroon.

To know more about OneImpact visit:
<https://stoptbpartnershiponeimpact.org/>
or write to us at caoimhes@stoptb.org

ONEIMPACT